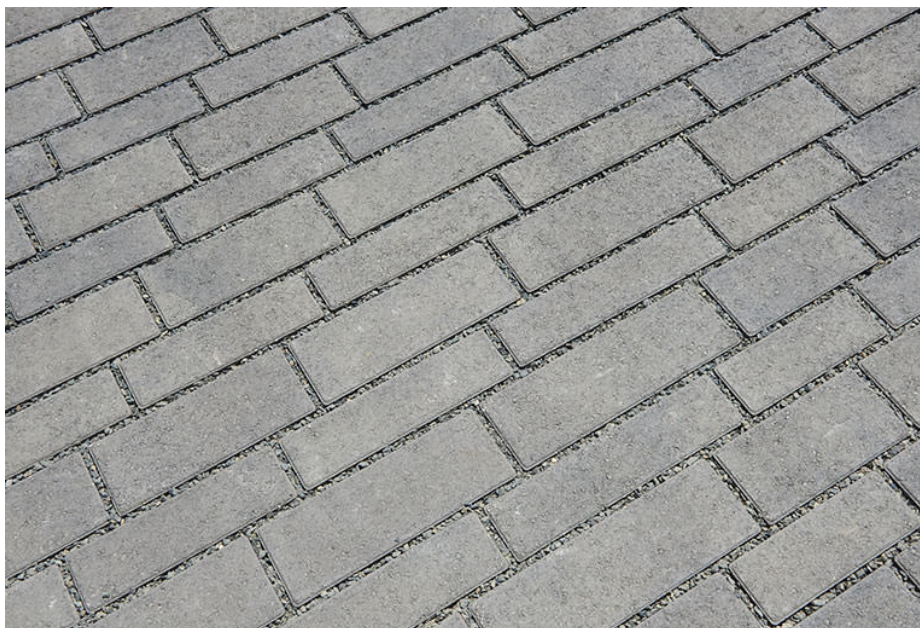


Permeable Aqualina

The new permeable Aqualina paver offers the same contemporary lines of the standard Aqualina paver, with the added benefit of permeability. This paver is 100mm, traffic rated and can be machine laid for maximum installation efficiency. The Permeable Aqualina is perfect for parking lots and traffic areas where reduced stormwater runoff is desired. The 3/8" gap in between the stones allow excellent permeability while meeting ADA requirements.

Stocked Colors:

Dark gray-Pewter-Charcoal



Shown: Dark Gray- Pewter- Charcoal



Permeable Aqualina

8 Stone Package

3.38 x 9.45"

3.38" x 11"

3.38" x 12.6"

3.38" x 14.18"

4.5" x 9.45"

4.5" x 11"

4.5" x 12.6"

4.5" x 14.18"

Permeable Aqualina

Size (in inches)

Sq Ft per Stone

Stones per Sq Ft

Sq Ft per Pallet

Stones per Pallet

Weight per Stone

Weight per Pallet

100mm

(see left)

varies

varies

81

224

varies

3265 lbs

For custom color options
contact your Angelus Sales
Representative at:

(951) 328-9115 or

(805) 485-1137

For more information on
Related Pavers & Walls
Products visit:
AngelusPavingstones.com

PERMEABLE AQUALINA

Blended Colors (swatches shown in Permeable Aqualina)



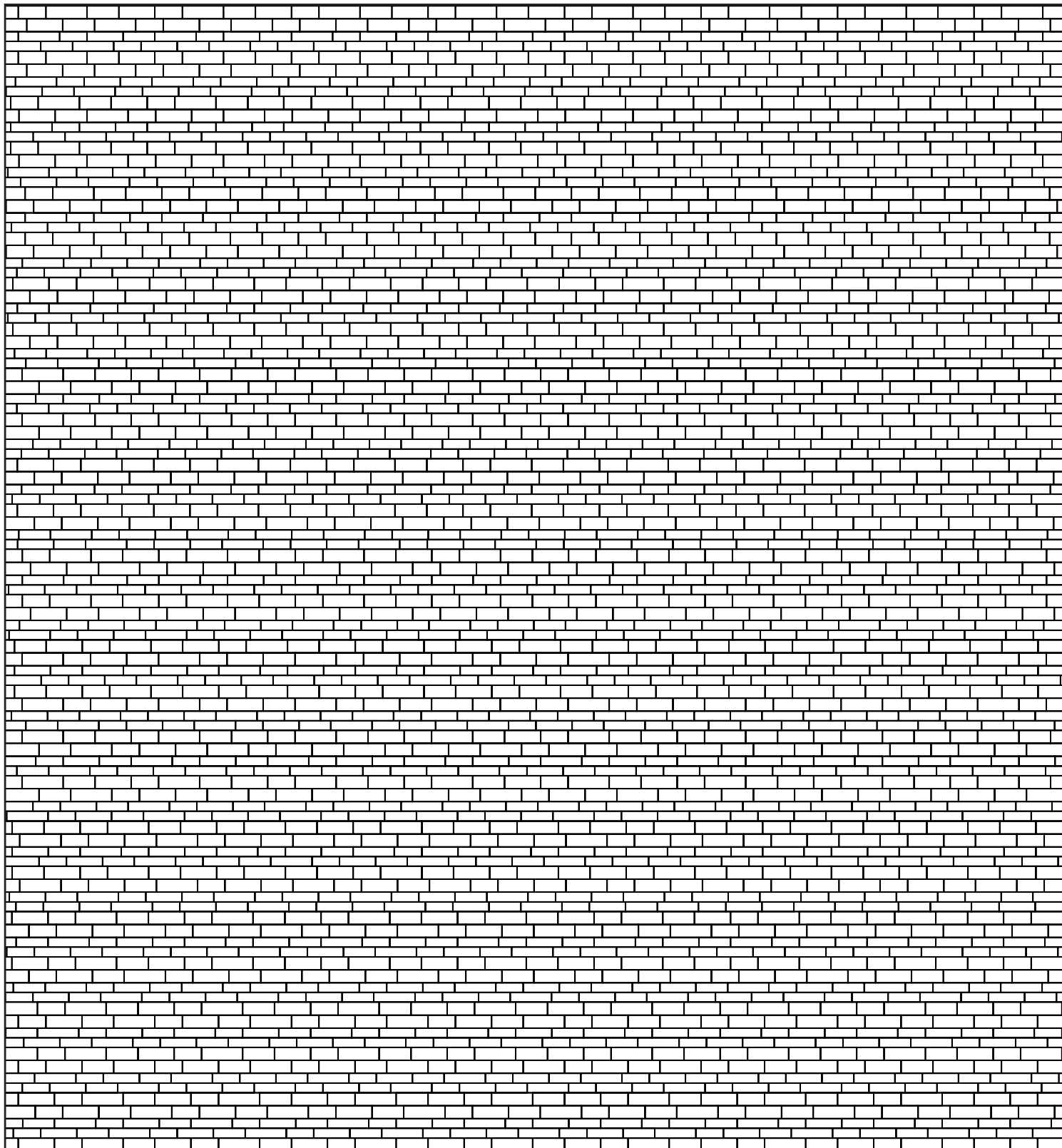
DARK GRAY - PEWTER - CHARCOAL



**AVAILABLE WITH
RECYCLED CONTENT**

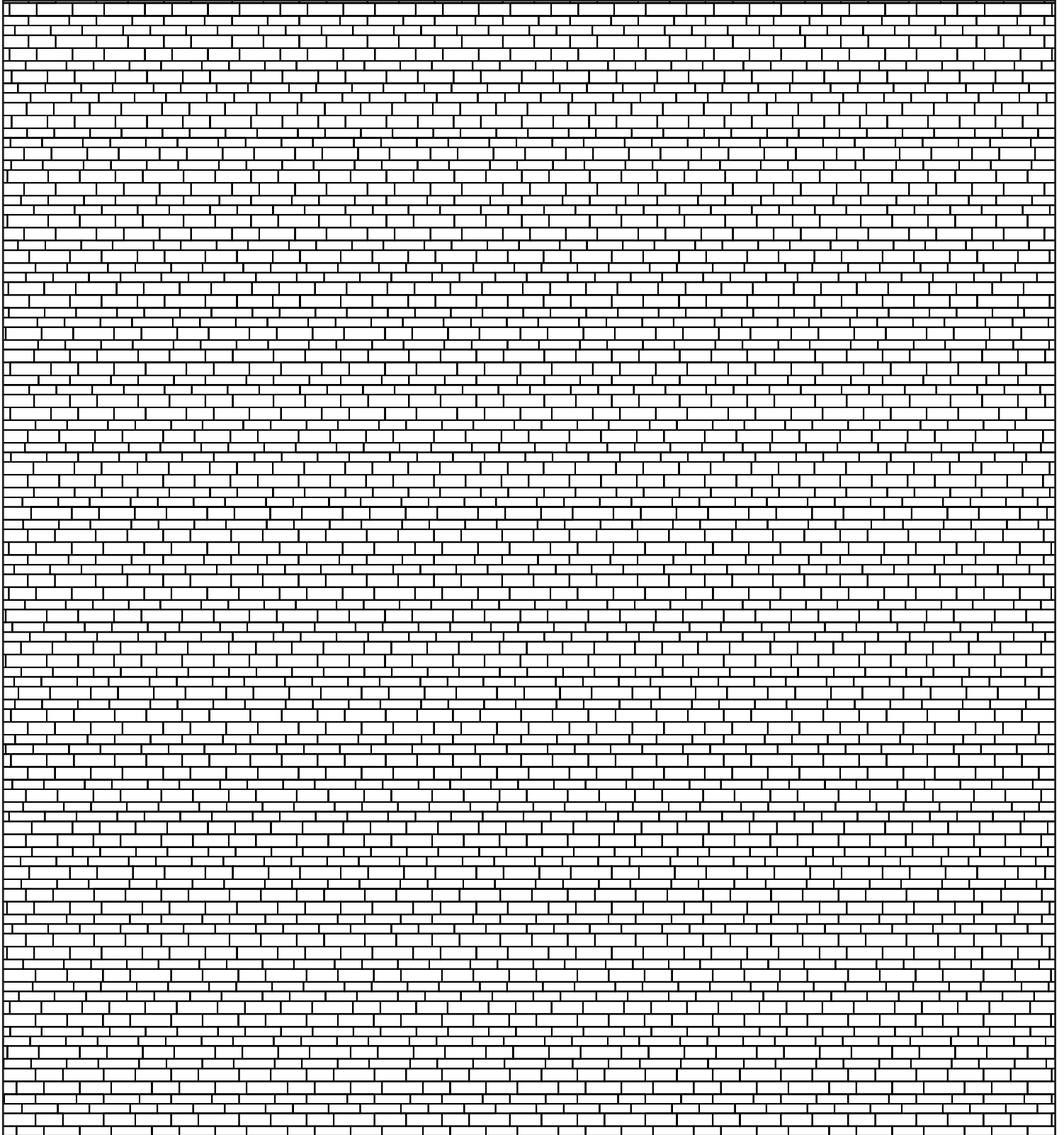
Aqualina Bands 2 x 2

100% Aqualina



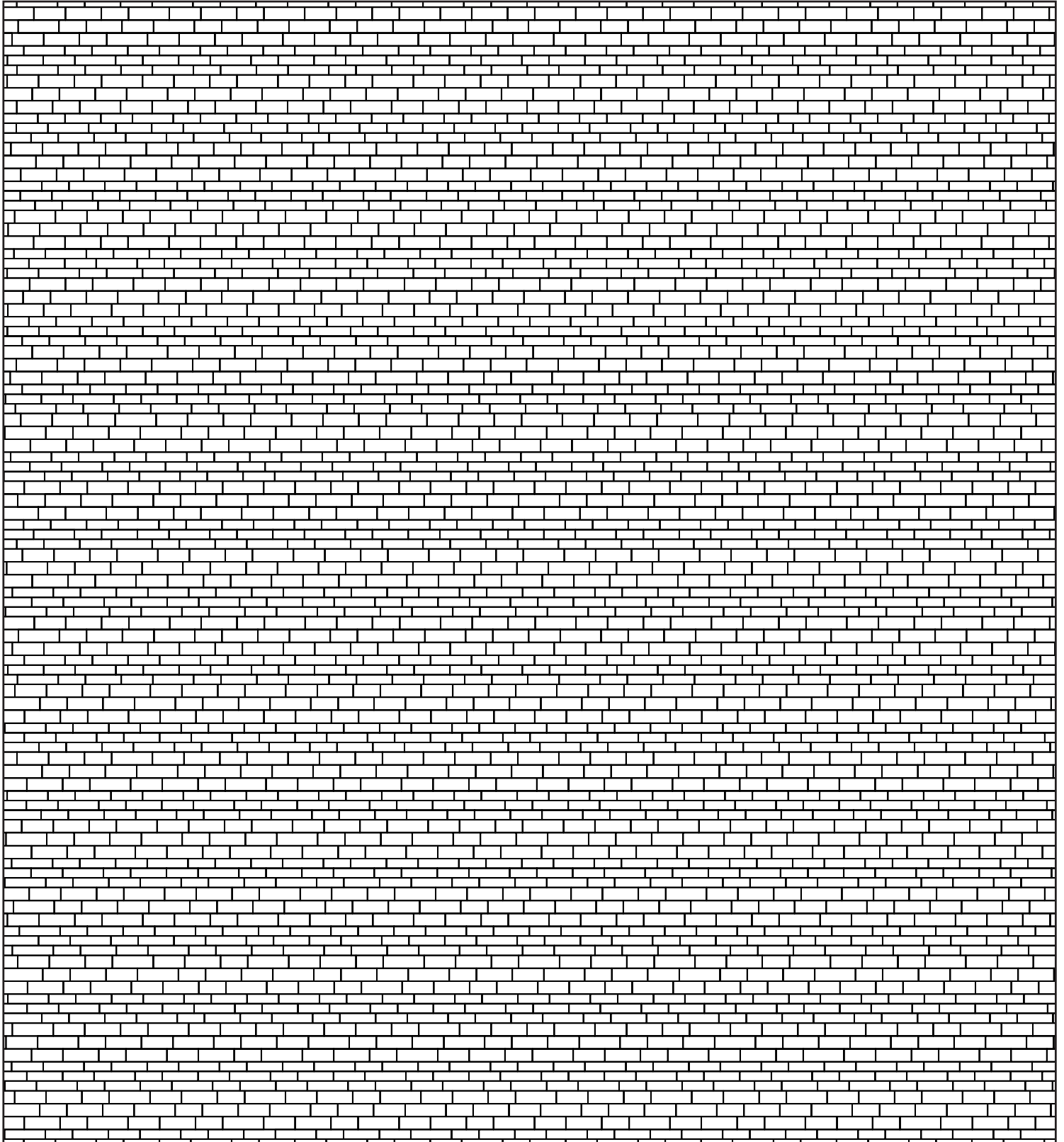
Aqualina Bands 2 x 2 x 1

100% Aqualina



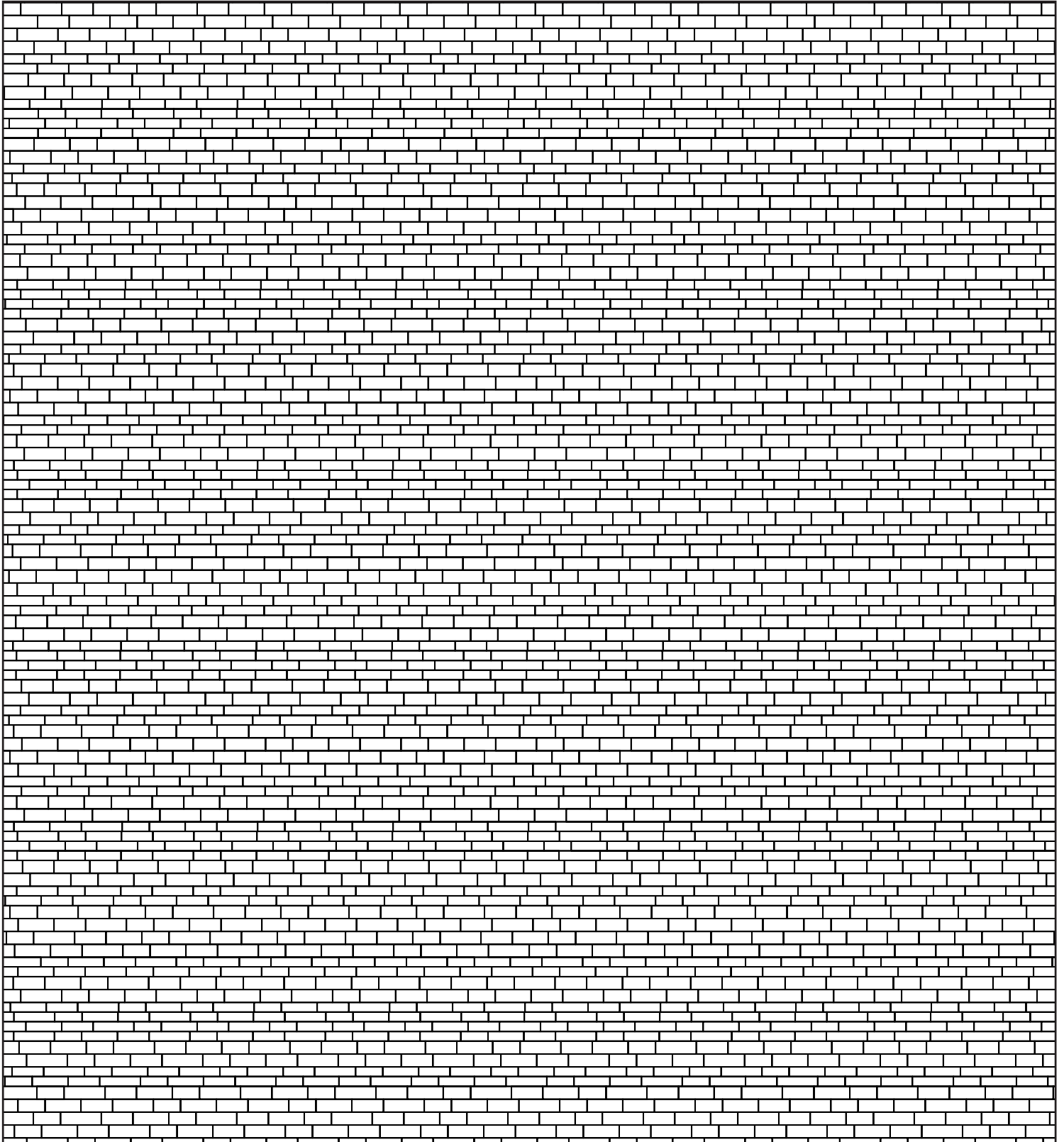
Aqualina Bands 3 x 3

100% Aqualina



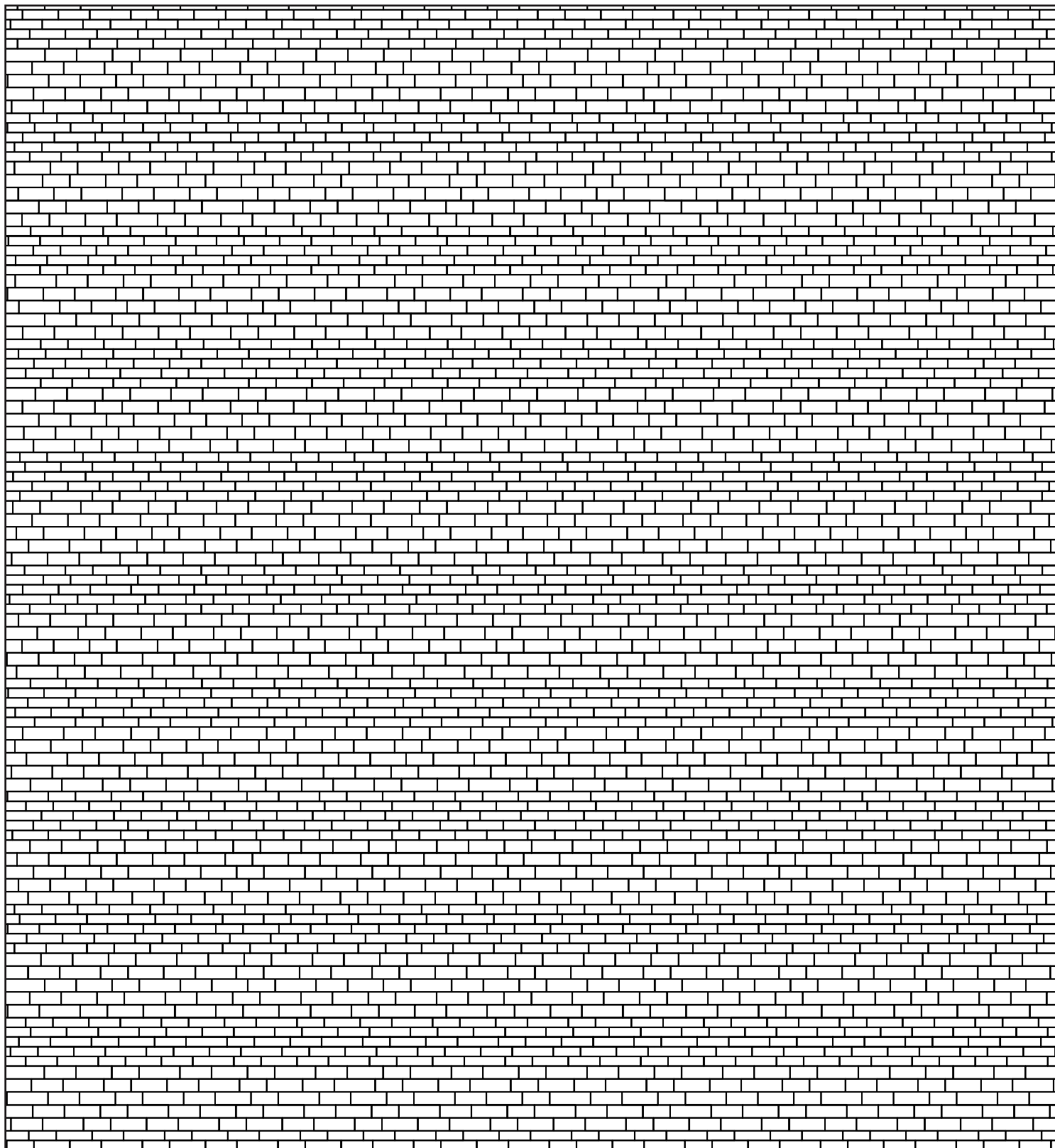
Aqualina Bands 4 x 2 x 2

100% Aqualina



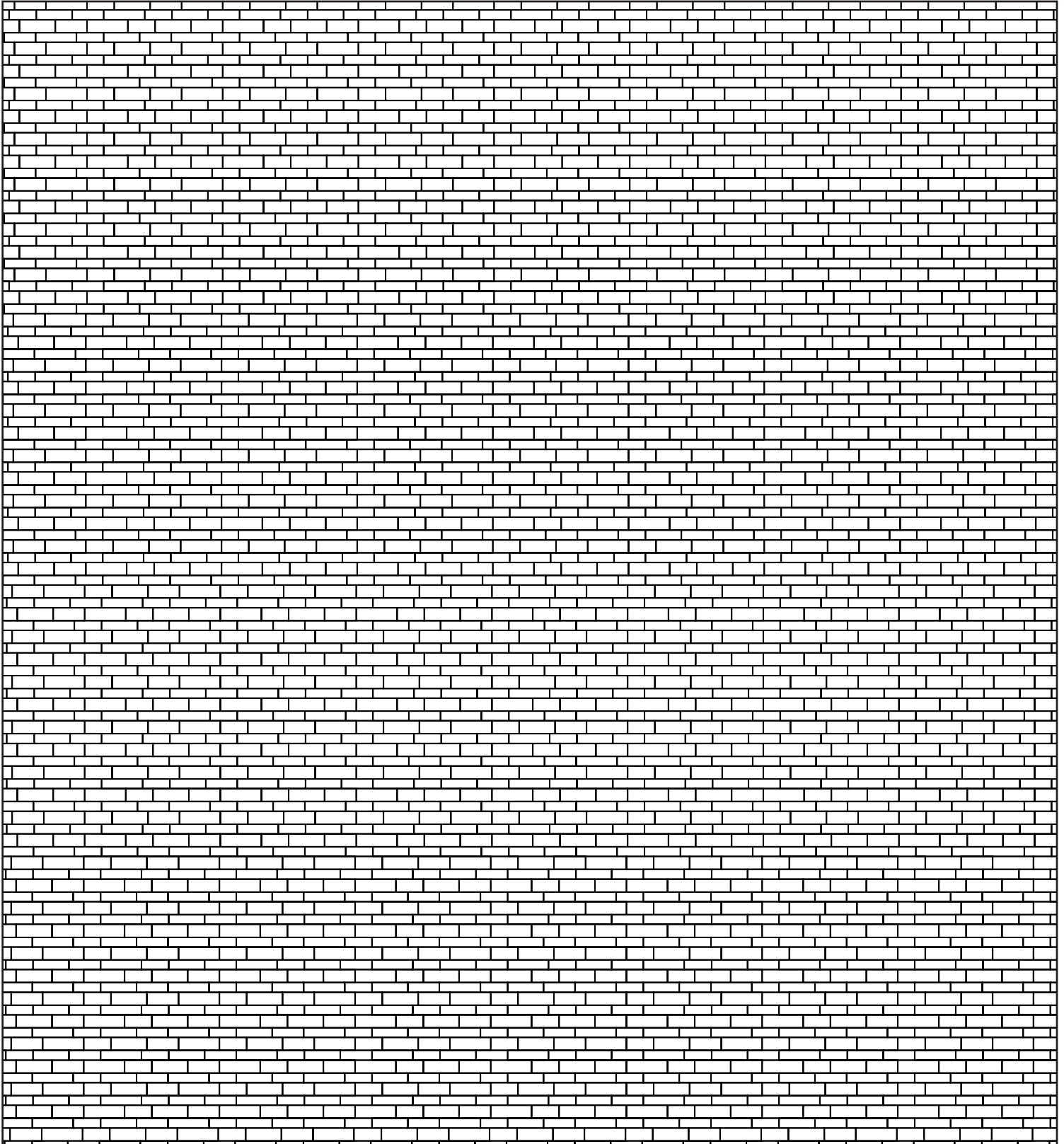
Aqualina Bands 5 x 5

100% Aqualina



Aqualina Machine Installed

100% Aqualina



Aqualina Random

100% Aqualina

